

SUNSET

AT CREEK BEACH

Sofiene Haddad +971503390477

FLOOR PLANS



EMAAR

DUBAI CREEK
HARBOUR

SUNSET AT
CREEK BEACH

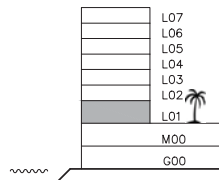
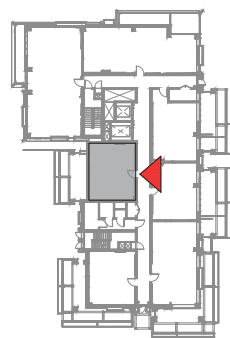
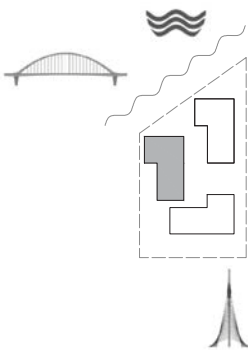
BUILDING 2

LEVEL 1

UNIT 101

1 BEDROOM

APARTMENT AREA	59.81 SQ.M.	643.79 SQ.FT.
BALCONY AREA	29.94 SQ.M.	322.27 SQ.FT.
TOTAL AREA	89.75 SQ.M.	966.06 SQ.FT.



FLOOR PLAN 1. All dimensions are in imperial and metric, and measured from finish to finish excluding construction tolerances. 2. All materials, dimensions, and drawings are approximate only. 3. Information is subject to change without notice, at developer's absolute discretion. 4. Actual area may vary from the stated area. 5. Drawings not to scale. 6. All images used are for illustrative purpose only and do not represent the actual size, features, specifications, fittings, and furnishings. 7. The developer reserves the right to make revisions / alterations, at its absolute discretion, without any liability whatsoever.

EMAAR

Sofiene Haddad +971503390477

DUBAI CREEK
HARBOUR

SUNSET AT
CREEK BEACH

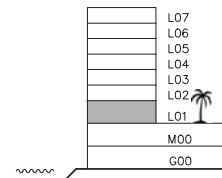
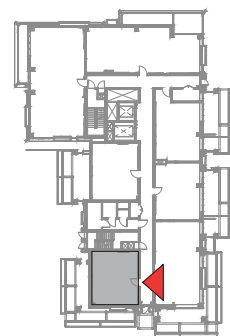
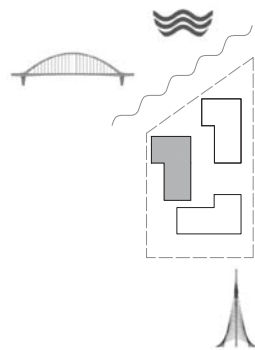
BUILDING 2

LEVEL 1

UNIT 102

1 BEDROOM

APARTMENT AREA	57.90 SQ.M.	623.23 SQ.FT.
BALCONY AREA	42.46 SQ.M.	457.04 SQ.FT.
TOTAL AREA	100.36 SQ.M.	1080.27 SQ.FT.



FLOOR PLAN 1. All dimensions are in imperial and metric, and measured from finish to finish excluding construction tolerances. 2. All materials, dimensions, and drawings are approximate only. 3. Information is subject to change without notice, at developer's absolute discretion. 4. Actual area may vary from the stated area. 5. Drawings not to scale. 6. All images used are for illustrative purpose only and do not represent the actual size, features, specifications, fittings, and furnishings. 7. The developer reserves the right to make revisions / alterations, at its absolute discretion, without any liability whatsoever.

EMAAR

Sofiene Haddad +971503390477

DUBAI CREEK
HARBOUR

SUNSET AT
CREEK BEACH

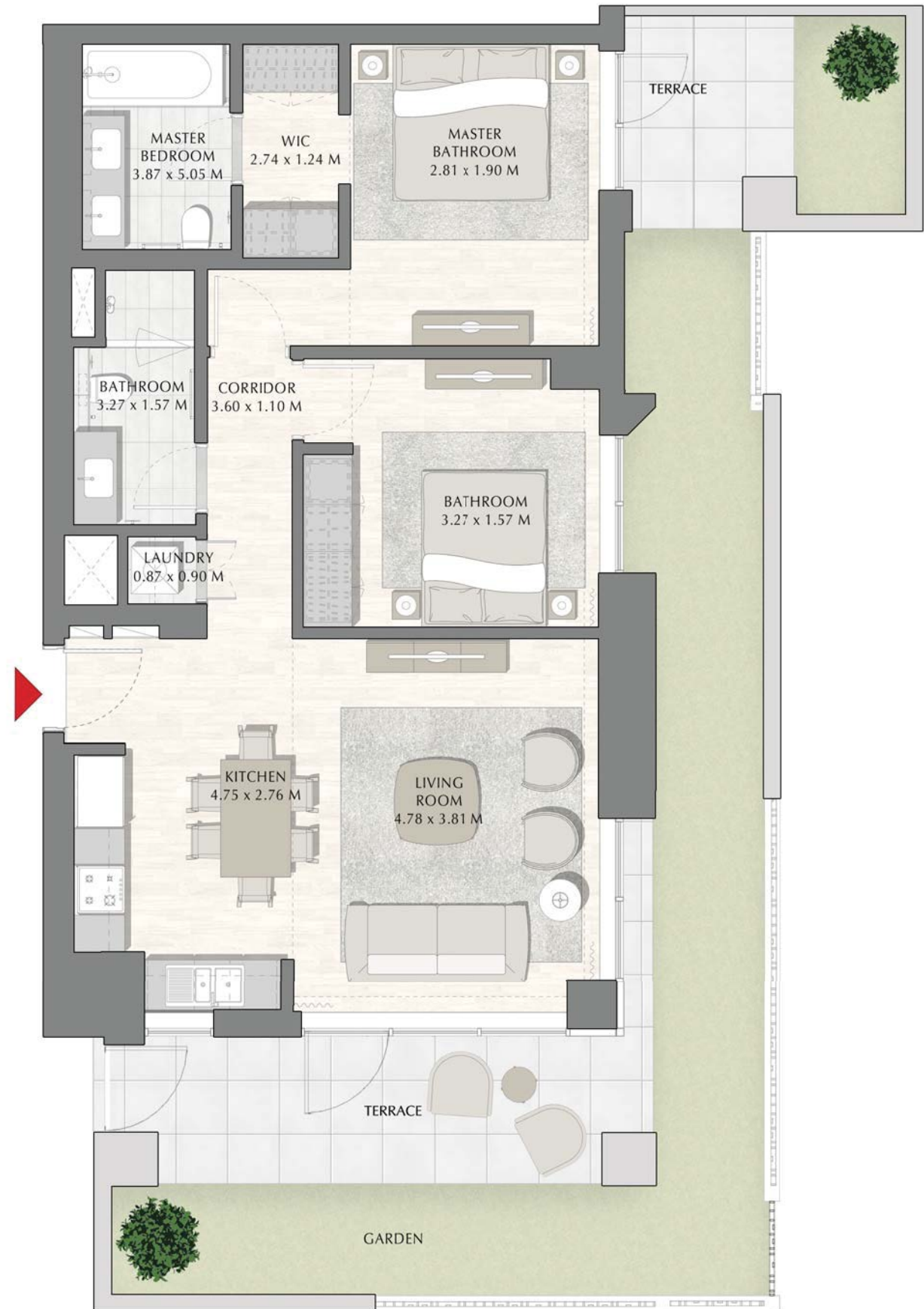
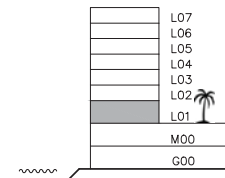
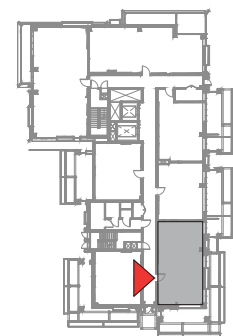
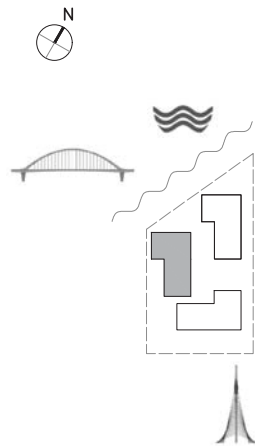
BUILDING 2

LEVEL 1

UNIT 103

2 BEDROOM

APARTMENT AREA	88.24 SQ.M.	949.81 SQ.FT.
BALCONY AREA	58.64 SQ.M.	631.20 SQ.FT.
TOTAL AREA	146.88 SQ.M.	1581.01 SQ.FT.



FLOOR PLAN 1. All dimensions are in imperial and metric, and measured from finish to finish excluding construction tolerances. 2.All materials, dimensions, and drawings are approximate only. 3. Information is subject to change without notice, at developer's absolute discretion. 4. Actual area may vary from the stated area. 5. Drawings not to scale. 6. All images used are for illustrative purpose only and do not represent the actual size, features, specifications, fittings, and furnishings. 7. The developer reserves the right to make revisions / alterations, at it's a absolute discretion, without any liability whatsoever.

DUBAI CREEK
HARBOUR

SUNSET AT
CREEK BEACH

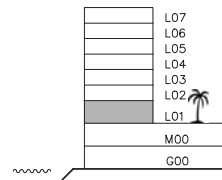
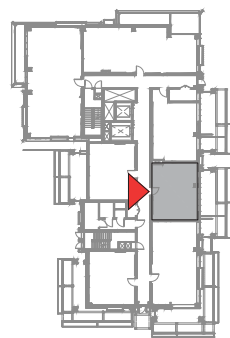
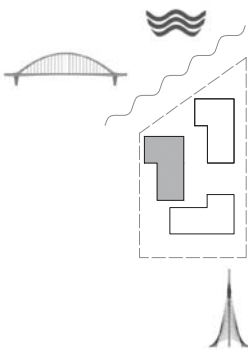
BUILDING 2

LEVEL 1

UNIT 104

1 BEDROOM

APARTMENT AREA	59.70 SQ.M.	642.61 SQ.FT.
BALCONY AREA	27.88 SQ.M.	300.10 SQ.FT.
TOTAL AREA	87.58 SQ.M.	942.71 SQ.FT.



FLOOR PLAN 1. All dimensions are in imperial and metric, and measured from finish to finish excluding construction tolerances. 2. All materials, dimensions, and drawings are approximate only. 3. Information is subject to change without notice, at developer's absolute discretion. 4. Actual area may vary from the stated area. 5. Drawings not to scale. 6. All images used are for illustrative purpose only and do not represent the actual size, features, specifications, fittings, and furnishings. 7. The developer reserves the right to make revisions / alterations, at its absolute discretion, without any liability whatsoever.

EMAAR

Sofiene Haddad +971503390477

DUBAI CREEK
HARBOUR

SUNSET AT
CREEK BEACH

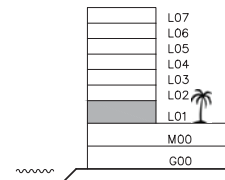
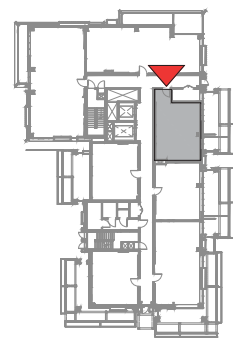
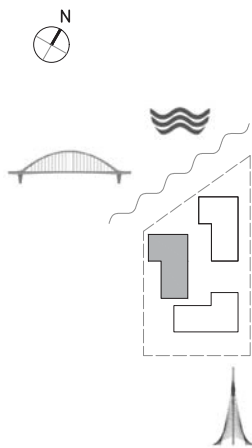
BUILDING 2

LEVEL 1

UNIT 105

1 BEDROOM

APARTMENT AREA	65.39 SQ.M.	703.85 SQ.FT.
BALCONY AREA	20.43 SQ.M.	219.91 SQ.FT.
TOTAL AREA	85.82 SQ.M.	923.76 SQ.FT.



FLOOR PLAN 1. All dimensions are in imperial and metric, and measured from finish to finish excluding construction tolerances. 2. All materials, dimensions, and drawings are approximate only. 3. Information is subject to change without notice, at developer's absolute discretion. 4. Actual area may vary from the stated area. 5. Drawings not to scale. 6. All images used are for illustrative purpose only and do not represent the actual size, features, specifications, fittings, and furnishings. 7. The developer reserves the right to make revisions / alterations, at its absolute discretion, without any liability whatsoever.

DUBAI CREEK
HARBOUR

SUNSET AT
CREEK BEACH

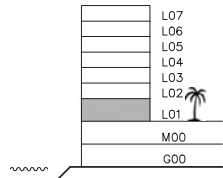
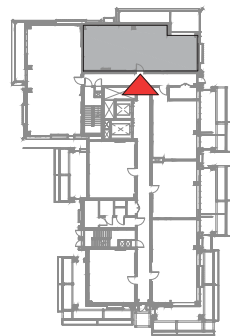
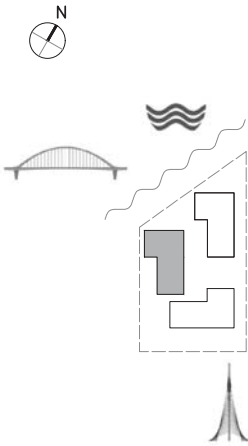
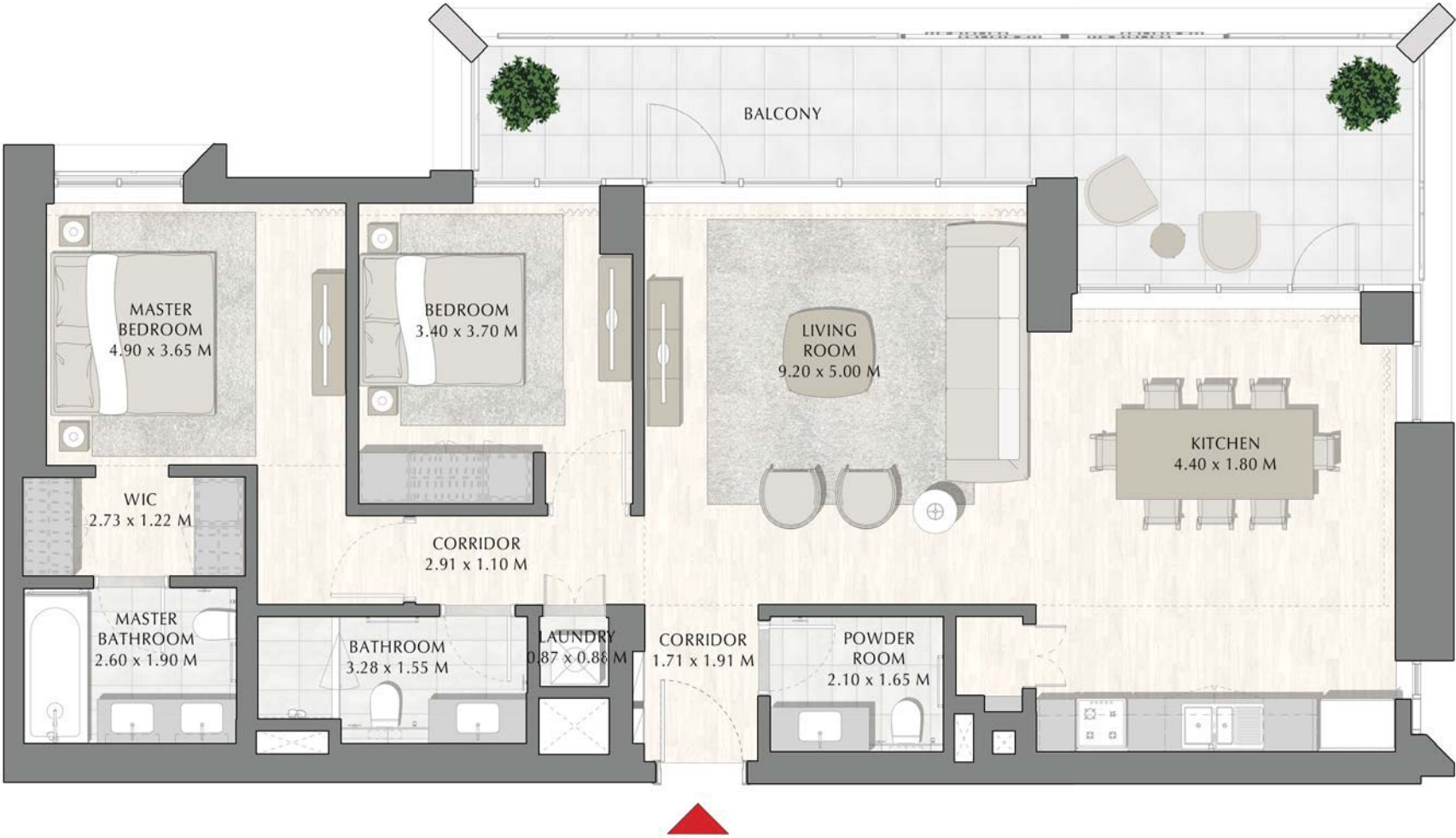
BUILDING 2

LEVEL 1

UNIT 106

2 BEDROOM

APARTMENT AREA	114.33 SQ.M.	1230.64 SQ.FT.
BALCONY AREA	26.50 SQ.M.	285.24 SQ.FT.
TOTAL AREA	140.83 SQ.M.	1515.88 SQ.FT.



FLOOR PLAN 1. All dimensions are in imperial and metric, and measured from finish to finish excluding construction tolerances. 2.All materials, dimensions, and drawings are approximate only. 3. Information is subject to change without notice, at developer's absolute discretion. 4. Actual area may vary from the stated area. 5. Drawings not to scale. 6. All images used are for illustrative purpose only and do not represent the actual size, features, specifications, fittings, and furnishings. 7. The developer reserves the right to make revisions / alterations, at its absolute discretion, without any liability whatsoever.

DUBAI CREEK
HARBOUR

SUNSET AT
CREEK BEACH

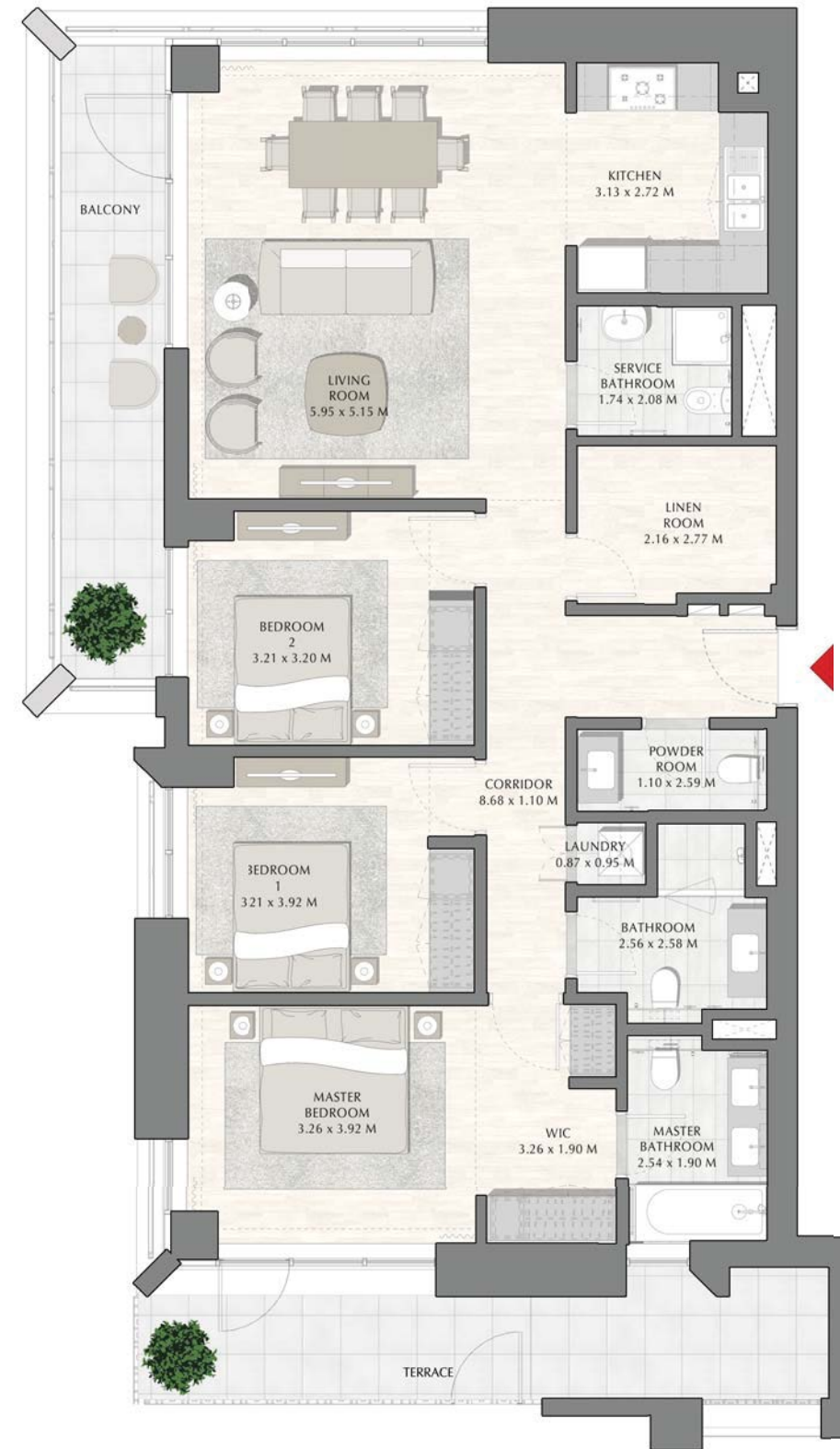
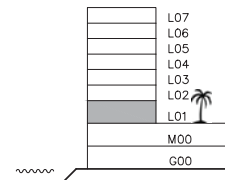
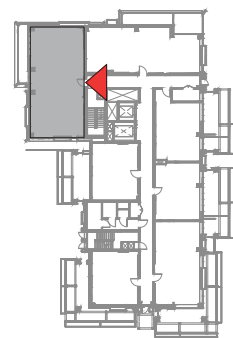
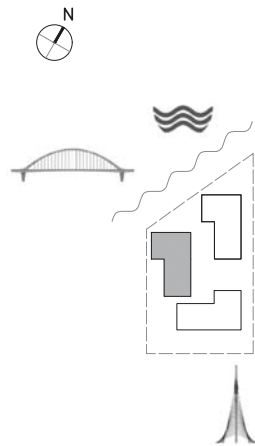
BUILDING 2

LEVEL 1

UNIT 107

3 BEDROOM

APARTMENT AREA	133.26 SQ.M.	1434.40 SQ.FT.
BALCONY AREA	31.39 SQ.M.	337.88 SQ.FT.
TOTAL AREA	164.65 SQ.M.	1772.28 SQ.FT.



FLOOR PLAN 1. All dimensions are in imperial and metric, and measured from finish to finish excluding construction tolerances. 2. All materials, dimensions, and drawings are approximate only. 3. Information is subject to change without notice, at developer's absolute discretion. 4. Actual area may vary from the stated area. 5. Drawings not to scale. 6. All images used are for illustrative purpose only and do not represent the actual size, features, specifications, fittings, and furnishings. 7. The developer reserves the right to make revisions / alterations, at it's a absolute discretion, without any liability whatsoever.

EMAAR

Sofiene Haddad +971503390477

DUBAI CREEK
HARBOUR

SUNSET AT
CREEK BEACH

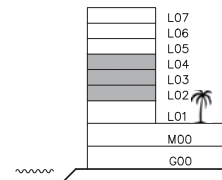
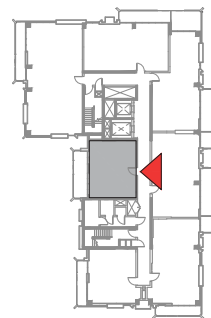
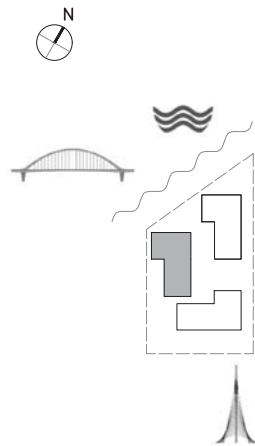
BUILDING 2

LEVEL 2, 3, 4

UNIT 201, 301, 401

1 BEDROOM

APARTMENT AREA	59.81 SQ.M.	643.79 SQ.FT.
BALCONY AREA	14.74 SQ.M.	158.66 SQ.FT.
TOTAL AREA	74.55 SQ.M.	802.45 SQ.FT.



FLOOR PLAN 1. All dimensions are in imperial and metric, and measured from finish to finish excluding construction tolerances. 2.All materials, dimensions, and drawings are approximate only. 3. Information is subject to change without notice, at developer's absolute discretion. 4. Actual area may vary from the stated area. 5. Drawings not to scale. 6. All images used are for illustrative purpose only and do not represent the actual size, features, specifications, fittings, and furnishings. 7. The developer reserves the right to make revisions / alterations, at it's a absolute discretion, without any liability whatsoever.

EMAAR

Sofiene Haddad +971503390477

DUBAI CREEK
HARBOUR

SUNSET AT
CREEK BEACH

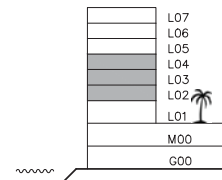
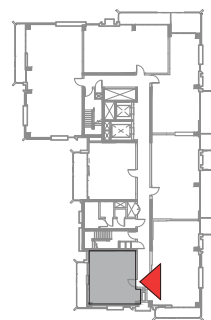
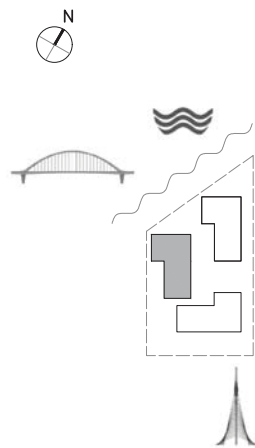
BUILDING 2

LEVEL 2, 3, 4

UNIT 202, 302, 402

1 BEDROOM

APARTMENT AREA	59.95 SQ.M.	645.30 SQ.FT.
BALCONY AREA	10.84 SQ.M.	116.68 SQ.FT.
TOTAL AREA	70.79 SQ.M.	761.98 SQ.FT.



FLOOR PLAN 1. All dimensions are in imperial and metric, and measured from finish to finish excluding construction tolerances. 2.All materials, dimensions, and drawings are approximate only. 3. Information is subject to change without notice, at developer's absolute discretion. 4. Actual area may vary from the stated area. 5. Drawings not to scale. 6. All images used are for illustrative purpose only and do not represent the actual size, features, specifications, fittings, and furnishings. 7. The developer reserves the right to make revisions / alterations, at it's a absolute discretion, without any liability whatsoever.

DUBAI CREEK
HARBOUR

SUNSET AT
CREEK BEACH

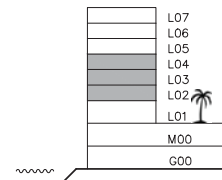
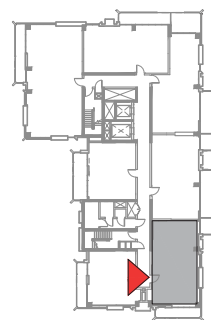
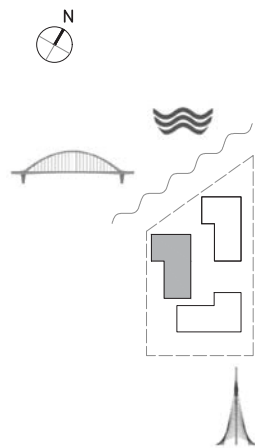
BUILDING 2

LEVEL 2, 3, 4

UNIT 203, 303, 403

2 BEDROOM

APARTMENT AREA	90.62 SQ.M.	975.43 SQ.FT.
BALCONY AREA	14.85 SQ.M.	159.84 SQ.FT.
TOTAL AREA	105.47 SQ.M.	1135.27 SQ.FT.



FLOOR PLAN 1. All dimensions are in imperial and metric, and measured from finish to finish excluding construction tolerances. 2.All materials, dimensions, and drawings are approximate only. 3. Information is subject to change without notice, at developer's absolute discretion. 4. Actual area may vary from the stated area. 5. Drawings not to scale. 6. All images used are for illustrative purpose only and do not represent the actual size, features, specifications, fittings, and furnishings. 7. The developer reserves the right to make revisions / alterations, at it's a absolute discretion, without any liability whatsoever.

DUBAI CREEK
HARBOUR

SUNSET AT
CREEK BEACH

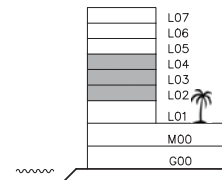
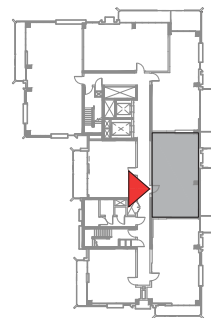
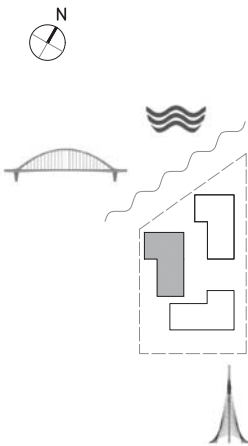
BUILDING 2

LEVEL 2, 3, 4

UNIT 204, 304, 404

2 BEDROOM

APARTMENT AREA	87.60 SQ.M.	942.92 SQ.FT.
BALCONY AREA	18.10 SQ.M.	194.83 SQ.FT.
TOTAL AREA	105.70 SQ.M.	1137.75 SQ.FT.



FLOOR PLAN 1. All dimensions are in imperial and metric, and measured from finish to finish excluding construction tolerances. 2. All materials, dimensions, and drawings are approximate only. 3. Information is subject to change without notice, at developer's absolute discretion. 4. Actual area may vary from the stated area. 5. Drawings not to scale. 6. All images used are for illustrative purpose only and do not represent the actual size, features, specifications, fittings, and furnishings. 7. The developer reserves the right to make revisions / alterations, at its absolute discretion, without any liability whatsoever.

EMAAR

Sofiene Haddad +971503390477

DUBAI CREEK
HARBOUR

SUNSET AT
CREEK BEACH

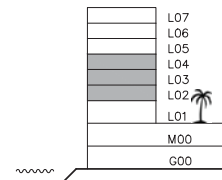
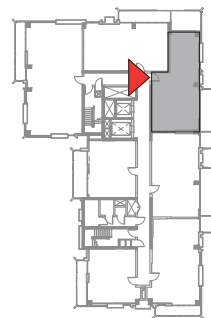
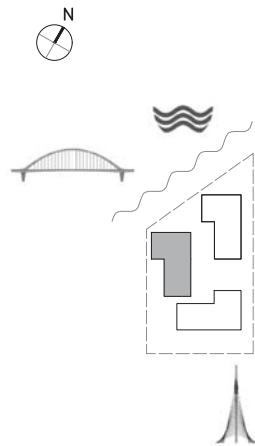
BUILDING 2

LEVEL 2, 3, 4

UNIT 205, 305, 405

2 BEDROOM

APARTMENT AREA	86.78 SQ.M.	934.09 SQ.FT.
BALCONY AREA	25.42 SQ.M.	273.62 SQ.FT.
TOTAL AREA	112.20 SQ.M.	1207.71 SQ.FT.



FLOOR PLAN 1. All dimensions are in imperial and metric, and measured from finish to finish excluding construction tolerances. 2. All materials, dimensions, and drawings are approximate only. 3. Information is subject to change without notice, at developer's absolute discretion. 4. Actual area may vary from the stated area. 5. Drawings not to scale. 6. All images used are for illustrative purpose only and do not represent the actual size, features, specifications, fittings, and furnishings. 7. The developer reserves the right to make revisions / alterations, at its absolute discretion, without any liability whatsoever.

EMAAR

Sofiene Haddad +971503390477

DUBAI CREEK
HARBOUR

SUNSET AT
CREEK BEACH

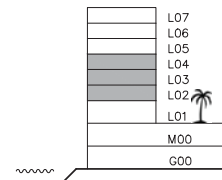
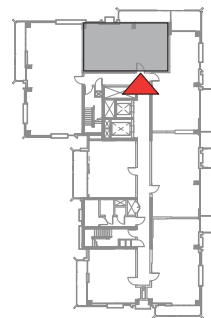
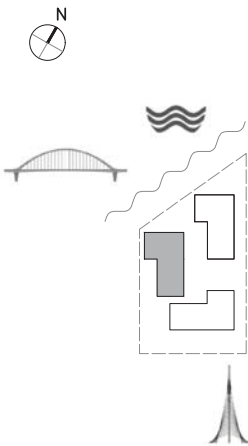
BUILDING 2

LEVEL 2, 3, 4

UNIT 206, 306, 406

2 BEDROOM

APARTMENT AREA	87.87 SQ.M.	945.82 SQ.FT.
BALCONY AREA	13.35 SQ.M.	143.70 SQ.FT.
TOTAL AREA	101.22 SQ.M.	1089.52 SQ.FT.



FLOOR PLAN 1. All dimensions are in imperial and metric, and measured from finish to finish excluding construction tolerances. 2. All materials, dimensions, and drawings are approximate only. 3. Information is subject to change without notice, at developer's absolute discretion. 4. Actual area may vary from the stated area. 5. Drawings not to scale. 6. All images used are for illustrative purpose only and do not represent the actual size, features, specifications, fittings, and furnishings. 7. The developer reserves the right to make revisions / alterations, at its absolute discretion, without any liability whatsoever.

EMAAR

Sofiene Haddad +971503390477

DUBAI CREEK
HARBOUR

SUNSET AT
CREEK BEACH

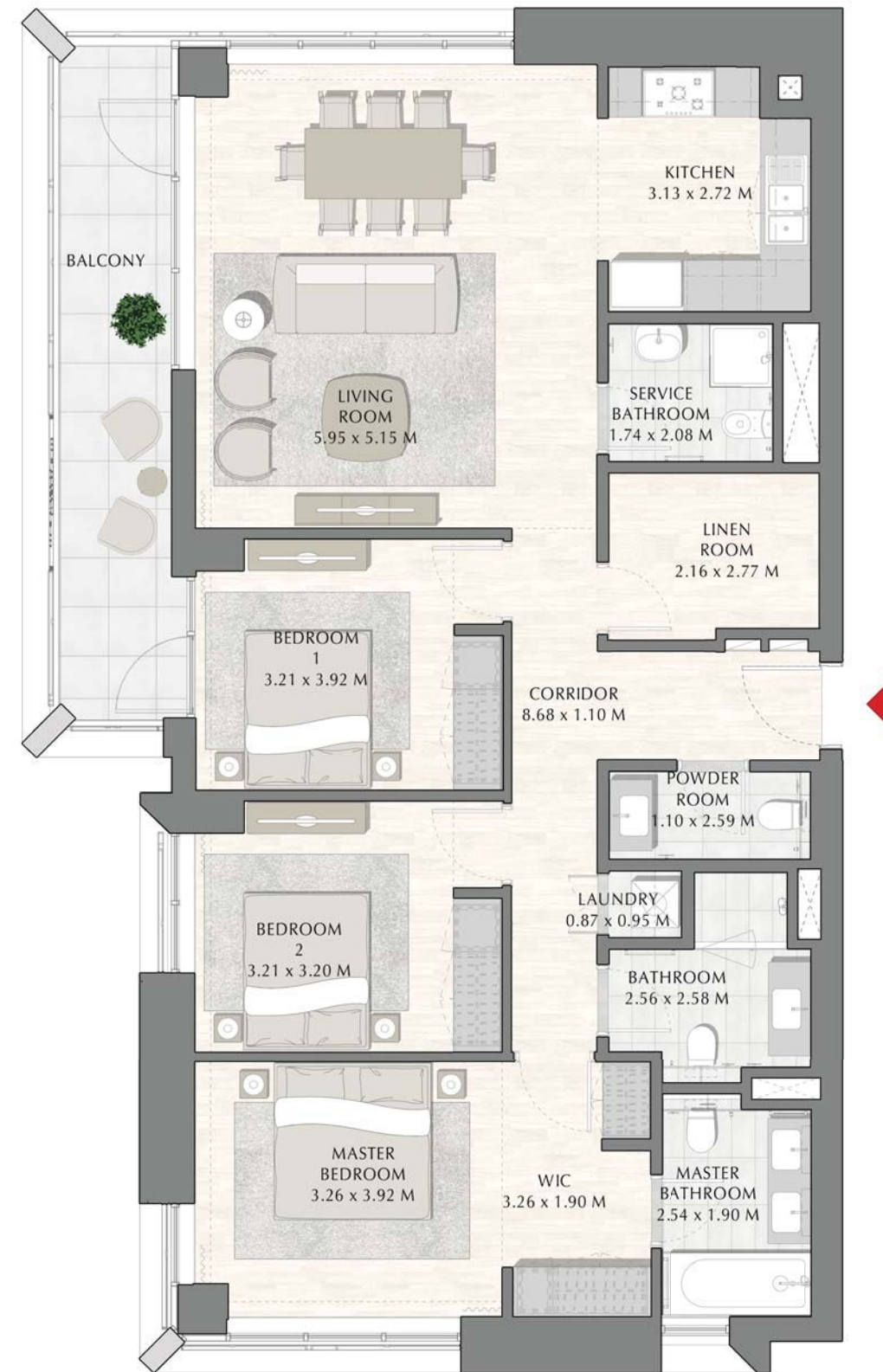
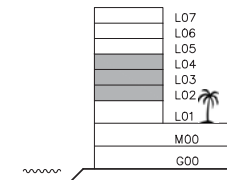
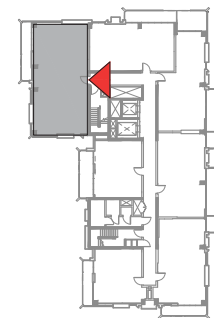
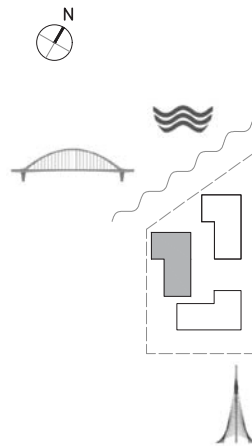
BUILDING 2

LEVEL 2, 3, 4

UNIT 207, 307, 407

3 BEDROOM

APARTMENT AREA	132.79 SQ.M.	1429.34 SQ.FT.
BALCONY AREA	14.81 SQ.M.	159.41 SQ.FT.
TOTAL AREA	147.60 SQ.M.	1588.75 SQ.FT.



FLOOR PLAN 1. All dimensions are in imperial and metric, and measured from finish to finish excluding construction tolerances. 2. All materials, dimensions, and drawings are approximate only. 3. Information is subject to change without notice, at developer's absolute discretion. 4. Actual area may vary from the stated area. 5. Drawings not to scale. 6. All images used are for illustrative purpose only and do not represent the actual size, features, specifications, fittings, and furnishings. 7. The developer reserves the right to make revisions / alterations, at it's a absolute discretion, without any liability whatsoever.

EMAAR

Sofiene Haddad +971503390477

DUBAI CREEK
HARBOUR

SUNSET AT
CREEK BEACH

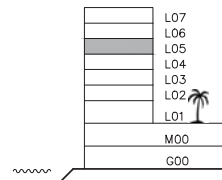
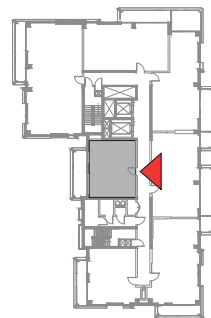
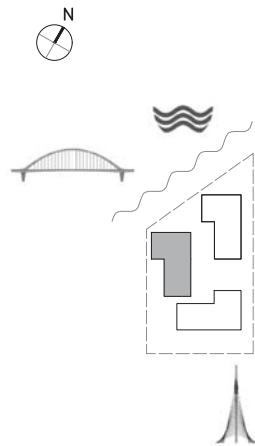
BUILDING 2

LEVEL 5

UNIT 501

1 BEDROOM

APARTMENT AREA	59.81 SQ.M.	643.79 SQ.FT.
BALCONY AREA	14.86 SQ.M.	159.95 SQ.FT.
TOTAL AREA	74.67 SQ.M.	803.74 SQ.FT.



FLOOR PLAN 1. All dimensions are in imperial and metric, and measured from finish to finish excluding construction tolerances. 2. All materials, dimensions, and drawings are approximate only. 3. Information is subject to change without notice, at developer's absolute discretion. 4. Actual area may vary from the stated area. 5. Drawings not to scale. 6. All images used are for illustrative purpose only and do not represent the actual size, features, specifications, fittings, and furnishings. 7. The developer reserves the right to make revisions / alterations, at it's a absolute discretion, without any liability whatsoever.

EMAAR

Sofiene Haddad +971503390477

DUBAI CREEK
HARBOUR

SUNSET AT
CREEK BEACH

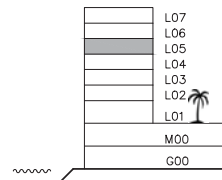
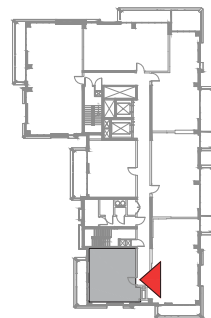
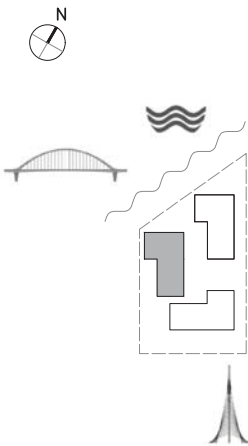
BUILDING 2

LEVEL 5

UNIT 502

1 BEDROOM

APARTMENT AREA	59.94 SQ.M.	645.19 SQ.FT.
BALCONY AREA	10.78 SQ.M.	116.03 SQ.FT.
TOTAL AREA	70.72 SQ.M.	761.22 SQ.FT.



FLOOR PLAN 1. All dimensions are in imperial and metric, and measured from finish to finish excluding construction tolerances. 2. All materials, dimensions, and drawings are approximate only. 3. Information is subject to change without notice, at developer's absolute discretion. 4. Actual area may vary from the stated area. 5. Drawings not to scale. 6. All images used are for illustrative purpose only and do not represent the actual size, features, specifications, fittings, and furnishings. 7. The developer reserves the right to make revisions / alterations, at its absolute discretion, without any liability whatsoever.

EMAAR

Sofiene Haddad +971503390477

DUBAI CREEK
HARBOUR

SUNSET AT
CREEK BEACH

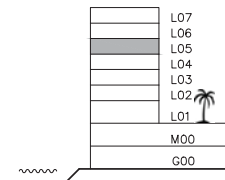
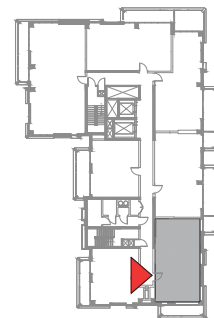
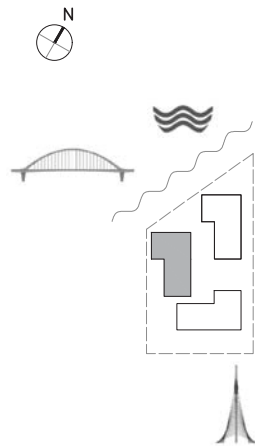
BUILDING 2

LEVEL 5

UNIT 503

2 BEDROOM

APARTMENT AREA	90.60 SQ.M.	975.21 SQ.FT.
BALCONY AREA	14.85 SQ.M.	159.84 SQ.FT.
TOTAL AREA	105.45 SQ.M.	1135.05 SQ.FT.



FLOOR PLAN 1. All dimensions are in imperial and metric, and measured from finish to finish excluding construction tolerances. 2.All materials, dimensions, and drawings are approximate only. 3. Information is subject to change without notice, at developer's absolute discretion. 4. Actual area may vary from the stated area. 5. Drawings not to scale. 6. All images used are for illustrative purpose only and do not represent the actual size, features, specifications, fittings, and furnishings. 7. The developer reserves the right to make revisions / alterations, at it's a absolute discretion, without any liability whatsoever.

EMAAR

Sofiene Haddad +971503390477

DUBAI CREEK
HARBOUR

SUNSET AT
CREEK BEACH

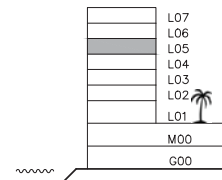
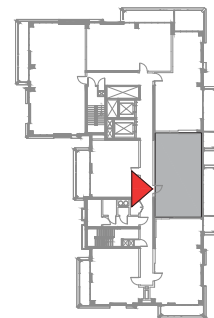
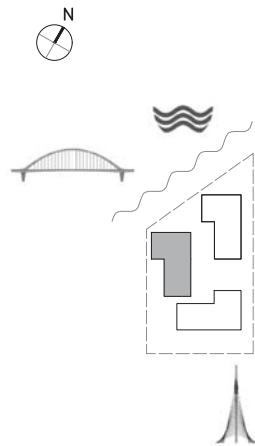
BUILDING 2

LEVEL 5

UNIT 504

2 BEDROOM

APARTMENT AREA	87.60 SQ.M.	942.92 SQ.FT.
BALCONY AREA	18.10 SQ.M.	194.83 SQ.FT.
TOTAL AREA	105.70 SQ.M.	1137.75 SQ.FT.



FLOOR PLAN 1. All dimensions are in imperial and metric, and measured from finish to finish excluding construction tolerances. 2. All materials, dimensions, and drawings are approximate only. 3. Information is subject to change without notice, at developer's absolute discretion. 4. Actual area may vary from the stated area. 5. Drawings not to scale. 6. All images used are for illustrative purpose only and do not represent the actual size, features, specifications, fittings, and furnishings. 7. The developer reserves the right to make revisions / alterations, at its absolute discretion, without any liability whatsoever.

EMAAR

Sofiene Haddad +971503390477

DUBAI CREEK
HARBOUR

SUNSET AT
CREEK BEACH

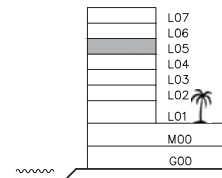
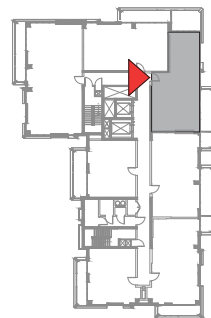
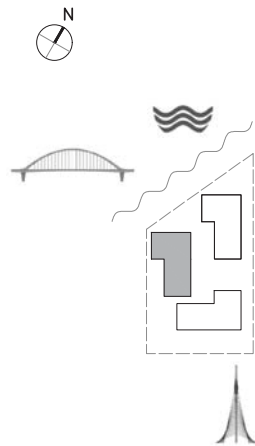
BUILDING 2

LEVEL 5

UNIT 505

2 BEDROOM

APARTMENT AREA	86.77 SQ.M.	933.98 SQ.FT.
BALCONY AREA	25.85 SQ.M.	278.25 SQ.FT.
TOTAL AREA	112.62 SQ.M.	1212.23 SQ.FT.



FLOOR PLAN 1. All dimensions are in imperial and metric, and measured from finish to finish excluding construction tolerances. 2. All materials, dimensions, and drawings are approximate only. 3. Information is subject to change without notice, at developer's absolute discretion. 4. Actual area may vary from the stated area. 5. Drawings not to scale. 6. All images used are for illustrative purpose only and do not represent the actual size, features, specifications, fittings, and furnishings. 7. The developer reserves the right to make revisions / alterations, at its absolute discretion, without any liability whatsoever.

EMAAR

Sofiene Haddad +971503390477

DUBAI CREEK
HARBOUR

SUNSET AT
CREEK BEACH

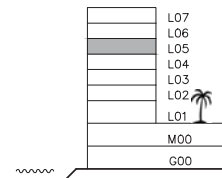
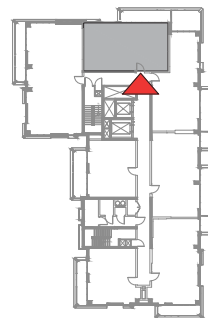
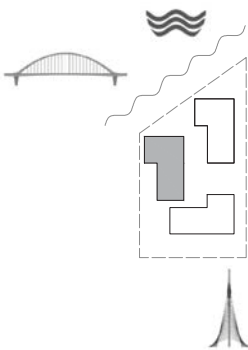
BUILDING 2

LEVEL 5

UNIT 506

2 BEDROOM

APARTMENT AREA	87.87 SQ.M.	945.82 SQ.FT.
BALCONY AREA	13.32 SQ.M.	143.38 SQ.FT.
TOTAL AREA	101.19 SQ.M.	1089.20 SQ.FT.



FLOOR PLAN 1. All dimensions are in imperial and metric, and measured from finish to finish excluding construction tolerances. 2. All materials, dimensions, and drawings are approximate only. 3. Information is subject to change without notice, at developer's absolute discretion. 4. Actual area may vary from the stated area. 5. Drawings not to scale. 6. All images used are for illustrative purpose only and do not represent the actual size, features, specifications, fittings, and furnishings. 7. The developer reserves the right to make revisions / alterations, at its absolute discretion, without any liability whatsoever.

EMAAR

Sofiene Haddad +971503390477

DUBAI CREEK
HARBOUR

SUNSET AT
CREEK BEACH

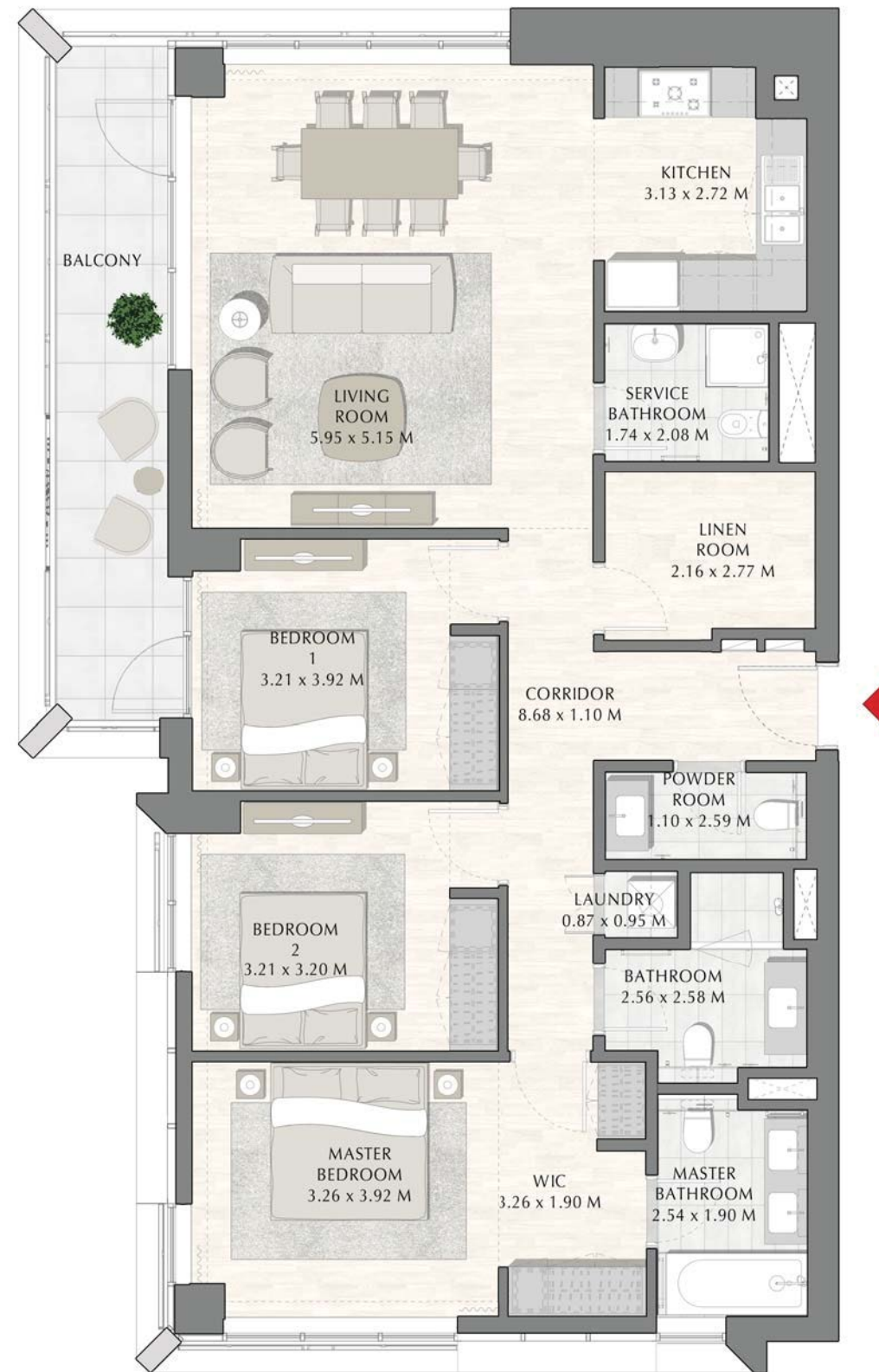
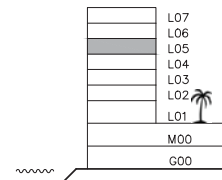
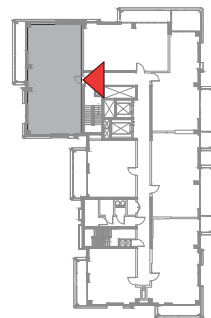
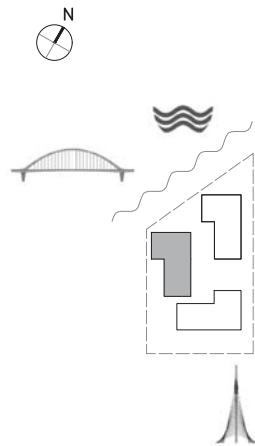
BUILDING 2

LEVEL 5

UNIT 507

3 BEDROOM

APARTMENT AREA	133.24 SQ.M.	1434.18 SQ.FT.
BALCONY AREA	14.46 SQ.M.	155.65 SQ.FT.
TOTAL AREA	147.70 SQ.M.	1589.83 SQ.FT.



FLOOR PLAN 1. All dimensions are in imperial and metric, and measured from finish to finish excluding construction tolerances. 2. All materials, dimensions, and drawings are approximate only. 3. Information is subject to change without notice, at developer's absolute discretion. 4. Actual area may vary from the stated area. 5. Drawings not to scale. 6. All images used are for illustrative purpose only and do not represent the actual size, features, specifications, fittings, and furnishings. 7. The developer reserves the right to make revisions / alterations, at its absolute discretion, without any liability whatsoever.

EMAAR

Sofiene Haddad +971503390477

DUBAI CREEK
HARBOUR

SUNSET AT
CREEK BEACH

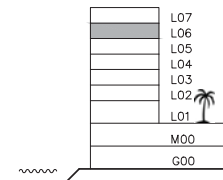
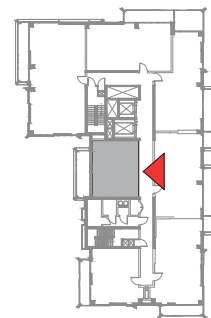
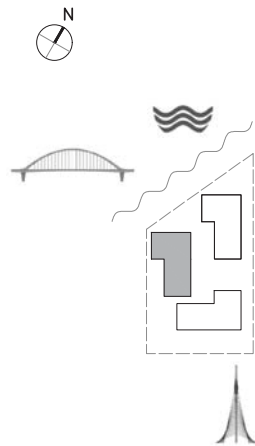
BUILDING 2

LEVEL 6

UNIT 601

1 BEDROOM

APARTMENT AREA	59.81 SQ.M.	643.79 SQ.FT.
BALCONY AREA	14.56 SQ.M.	156.72 SQ.FT.
TOTAL AREA	74.37 SQ.M.	800.51 SQ.FT.



FLOOR PLAN 1. All dimensions are in imperial and metric, and measured from finish to finish excluding construction tolerances. 2. All materials, dimensions, and drawings are approximate only. 3. Information is subject to change without notice, at developer's absolute discretion. 4. Actual area may vary from the stated area. 5. Drawings not to scale. 6. All images used are for illustrative purpose only and do not represent the actual size, features, specifications, fittings, and furnishings. 7. The developer reserves the right to make revisions / alterations, at it's a absolute discretion, without any liability whatsoever.

EMAAR

Sofiene Haddad +971503390477

DUBAI CREEK
HARBOUR

SUNSET AT
CREEK BEACH

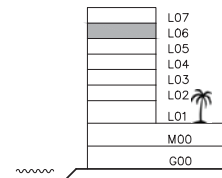
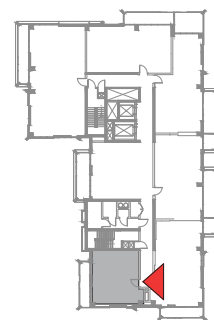
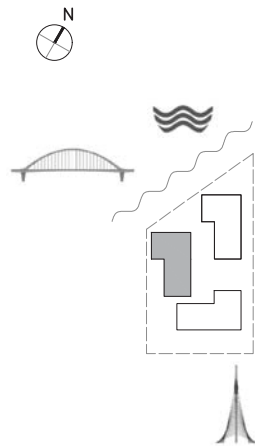
BUILDING 2

LEVEL 6

UNIT 602

1 BEDROOM

APARTMENT AREA	59.91 SQ.M.	644.87 SQ.FT.
BALCONY AREA	10.89 SQ.M.	117.22 SQ.FT.
TOTAL AREA	70.80 SQ.M.	762.09 SQ.FT.



FLOOR PLAN 1. All dimensions are in imperial and metric, and measured from finish to finish excluding construction tolerances. 2. All materials, dimensions, and drawings are approximate only. 3. Information is subject to change without notice, at developer's absolute discretion. 4. Actual area may vary from the stated area. 5. Drawings not to scale. 6. All images used are for illustrative purpose only and do not represent the actual size, features, specifications, fittings, and furnishings. 7. The developer reserves the right to make revisions / alterations, at its absolute discretion, without any liability whatsoever.

EMAAR

Sofiene Haddad +971503390477

DUBAI CREEK
HARBOUR

SUNSET AT
CREEK BEACH

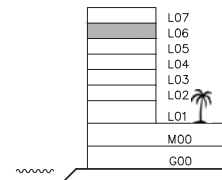
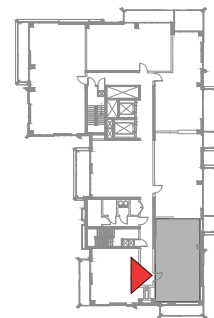
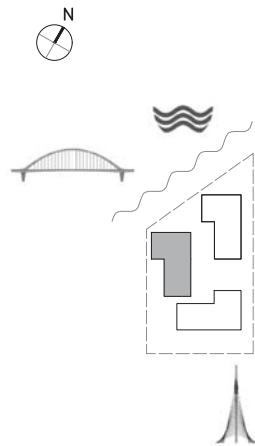
BUILDING 2

LEVEL 6

UNIT 603

2 BEDROOM

APARTMENT AREA	90.24 SQ.M.	971.34 SQ.FT.
BALCONY AREA	14.74 SQ.M.	158.66 SQ.FT.
TOTAL AREA	104.98 SQ.M.	1130.00 SQ.FT.



FLOOR PLAN 1. All dimensions are in imperial and metric, and measured from finish to finish excluding construction tolerances. 2.All materials, dimensions, and drawings are approximate only. 3. Information is subject to change without notice, at developer's absolute discretion. 4. Actual area may vary from the stated area. 5. Drawings not to scale. 6. All images used are for illustrative purpose only and do not represent the actual size, features, specifications, fittings, and furnishings. 7. The developer reserves the right to make revisions / alterations, at it's a absolute discretion, without any liability whatsoever.

EMAAR

Sofiene Haddad +971503390477

DUBAI CREEK
HARBOUR

SUNSET AT
CREEK BEACH

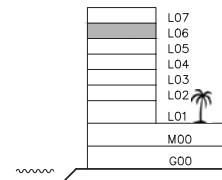
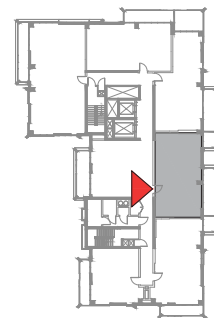
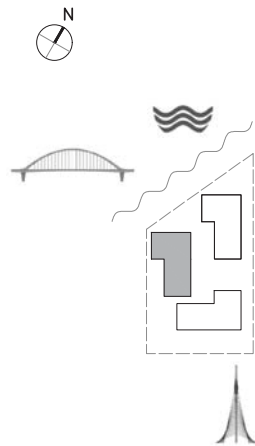
BUILDING 2

LEVEL 6

UNIT 604

2 BEDROOM

APARTMENT AREA	87.60 SQ.M.	942.92 SQ.FT.
BALCONY AREA	17.70 SQ.M.	190.52 SQ.FT.
TOTAL AREA	105.30 SQ.M.	1133.44 SQ.FT.



FLOOR PLAN 1. All dimensions are in imperial and metric, and measured from finish to finish excluding construction tolerances. 2. All materials, dimensions, and drawings are approximate only. 3. Information is subject to change without notice, at developer's absolute discretion. 4. Actual area may vary from the stated area. 5. Drawings not to scale. 6. All images used are for illustrative purpose only and do not represent the actual size, features, specifications, fittings, and furnishings. 7. The developer reserves the right to make revisions / alterations, at its absolute discretion, without any liability whatsoever.

EMAAR

Sofiene Haddad +971503390477

DUBAI CREEK
HARBOUR

SUNSET AT
CREEK BEACH

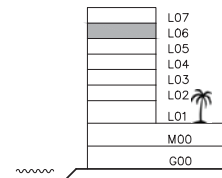
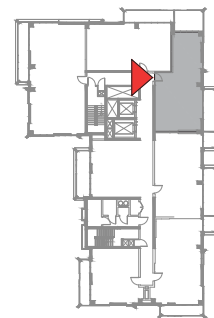
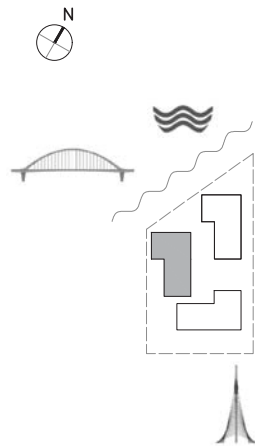
BUILDING 2

LEVEL 6

UNIT 605

2 BEDROOM

APARTMENT AREA	86.77 SQ.M.	933.98 SQ.FT.
BALCONY AREA	25.42 SQ.M.	273.62 SQ.FT.
TOTAL AREA	112.19 SQ.M.	1207.60 SQ.FT.



FLOOR PLAN 1. All dimensions are in imperial and metric, and measured from finish to finish excluding construction tolerances. 2. All materials, dimensions, and drawings are approximate only. 3. Information is subject to change without notice, at developer's absolute discretion. 4. Actual area may vary from the stated area. 5. Drawings not to scale. 6. All images used are for illustrative purpose only and do not represent the actual size, features, specifications, fittings, and furnishings. 7. The developer reserves the right to make revisions / alterations, at its absolute discretion, without any liability whatsoever.

EMAAR

Sofiene Haddad +971503390477

DUBAI CREEK
HARBOUR

SUNSET AT
CREEK BEACH

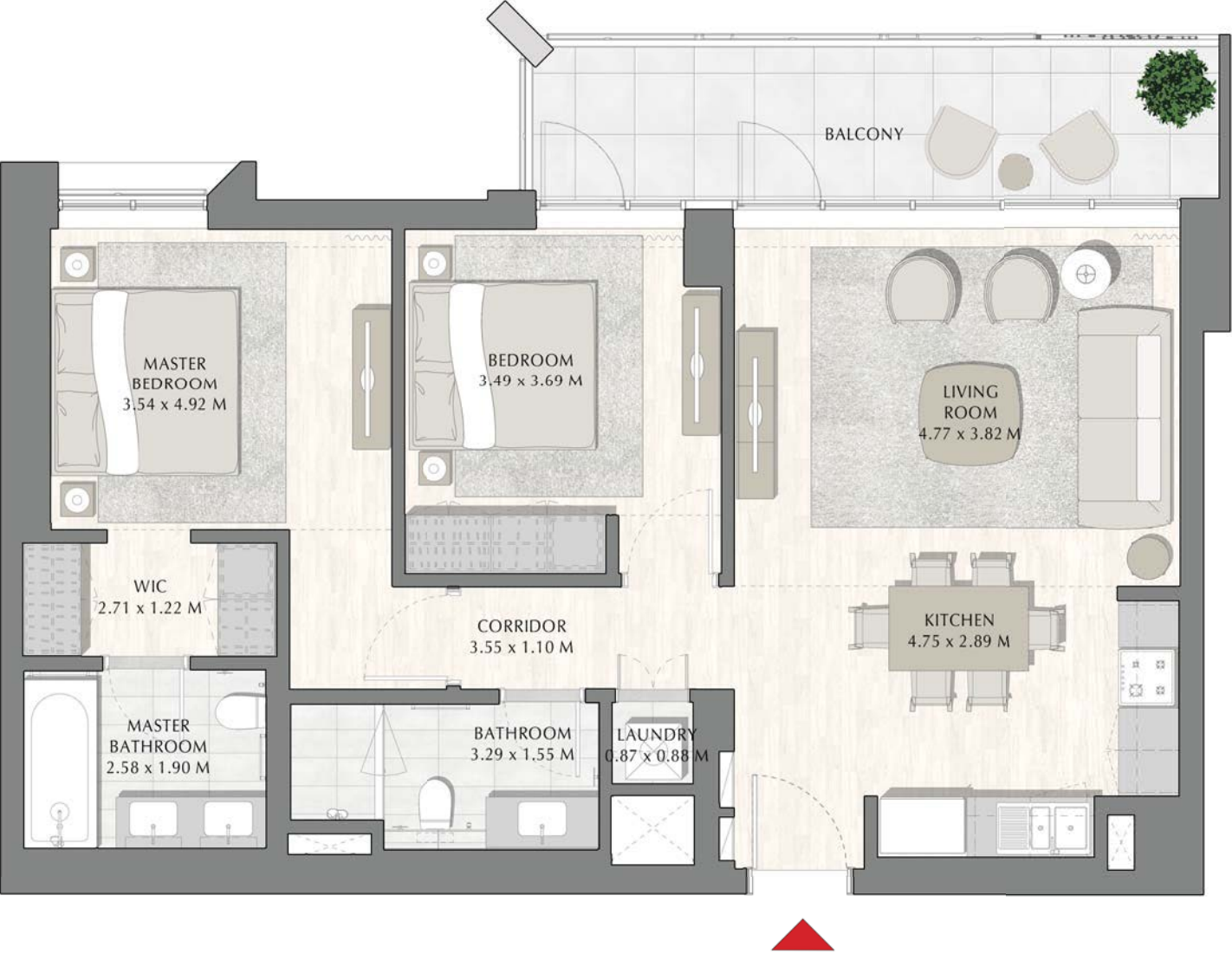
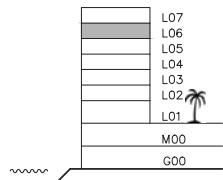
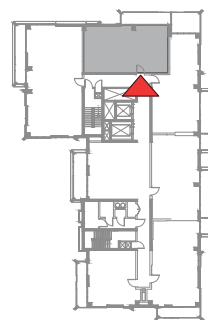
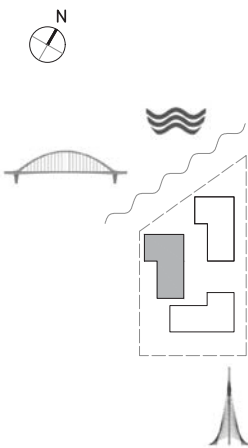
BUILDING 2

LEVEL 6

UNIT 606

2 BEDROOM

APARTMENT AREA	87.54 SQ.M.	942.27 SQ.FT.
BALCONY AREA	13.34 SQ.M.	143.59 SQ.FT.
TOTAL AREA	100.88 SQ.M.	1085.86 SQ.FT.



FLOOR PLAN 1. All dimensions are in imperial and metric, and measured from finish to finish excluding construction tolerances. 2.All materials, dimensions, and drawings are approximate only. 3. Information is subject to change without notice, at developer's absolute discretion. 4. Actual area may vary from the stated area. 5. Drawings not to scale. 6. All images used are for illustrative purpose only and do not represent the actual size, features, specifications, fittings, and furnishings. 7. The developer reserves the right to make revisions / alterations, at it's a absolute discretion, without any liability whatsoever.

DUBAI CREEK
HARBOUR

SUNSET AT
CREEK BEACH

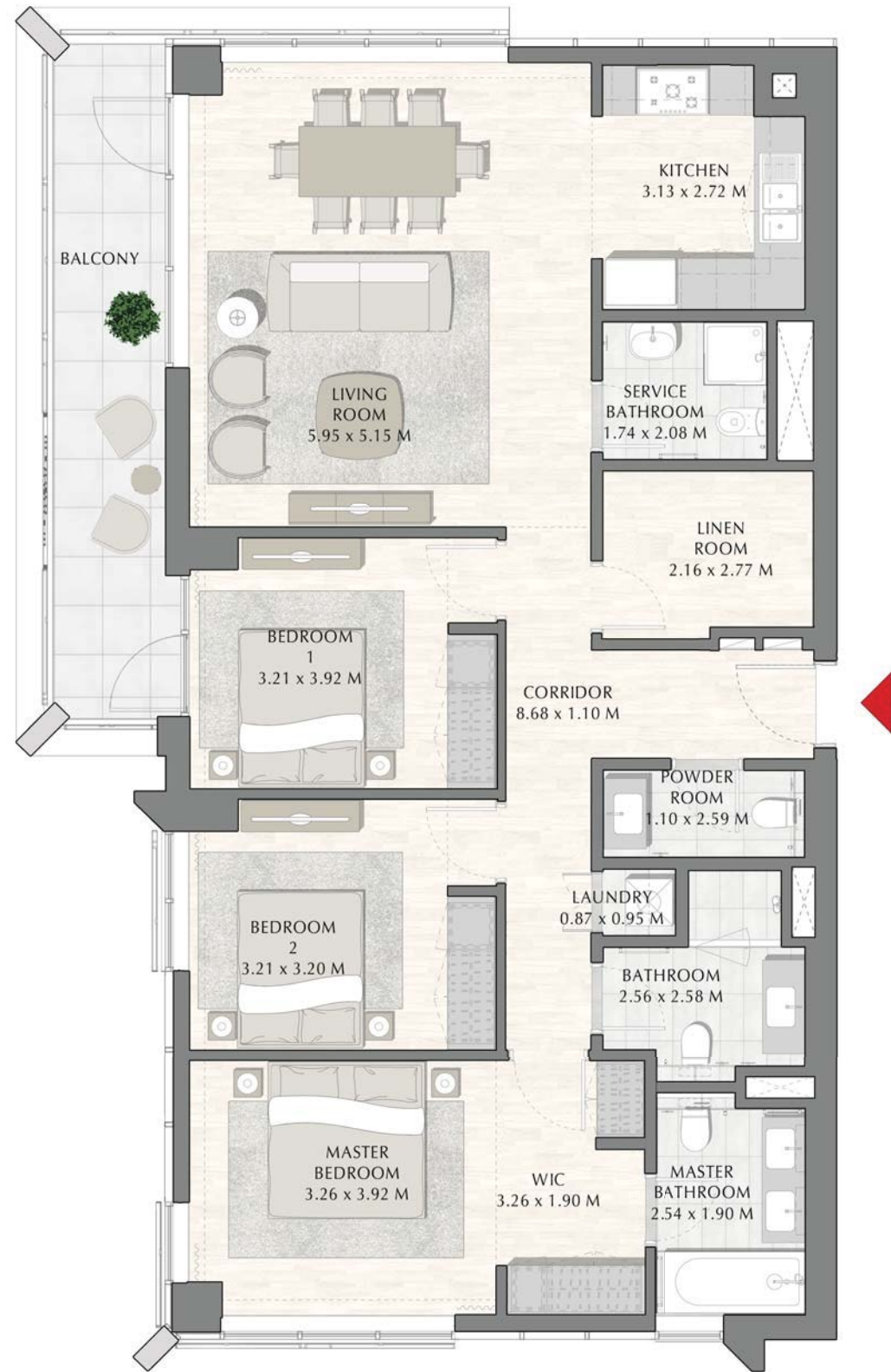
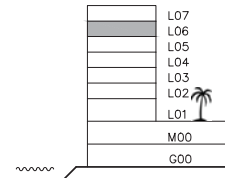
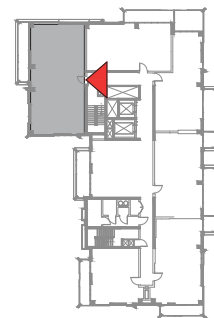
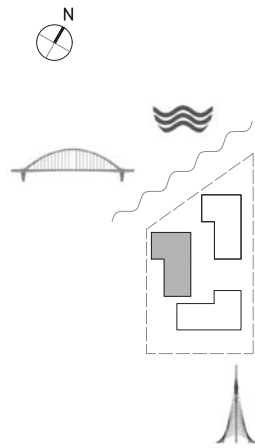
BUILDING 2

LEVEL 6

UNIT 607

3 BEDROOM

APARTMENT AREA	133.22 SQ.M.	1433.97 SQ.FT.
BALCONY AREA	14.64 SQ.M.	157.58 SQ.FT.
TOTAL AREA	147.86 SQ.M.	1591.55 SQ.FT.



FLOOR PLAN 1. All dimensions are in imperial and metric, and measured from finish to finish excluding construction tolerances. 2. All materials, dimensions, and drawings are approximate only. 3. Information is subject to change without notice, at developer's absolute discretion. 4. Actual area may vary from the stated area. 5. Drawings not to scale. 6. All images used are for illustrative purpose only and do not represent the actual size, features, specifications, fittings, and furnishings. 7. The developer reserves the right to make revisions / alterations, at it's a absolute discretion, without any liability whatsoever.

EMAAR

Sofiene Haddad +971503390477

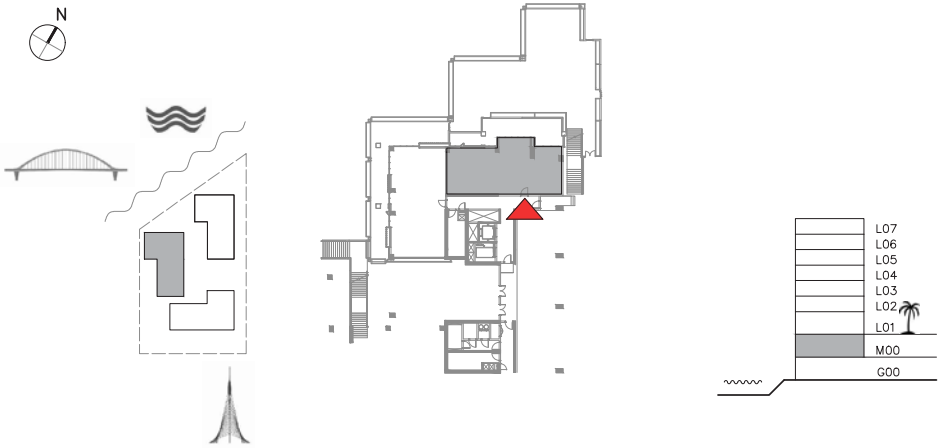
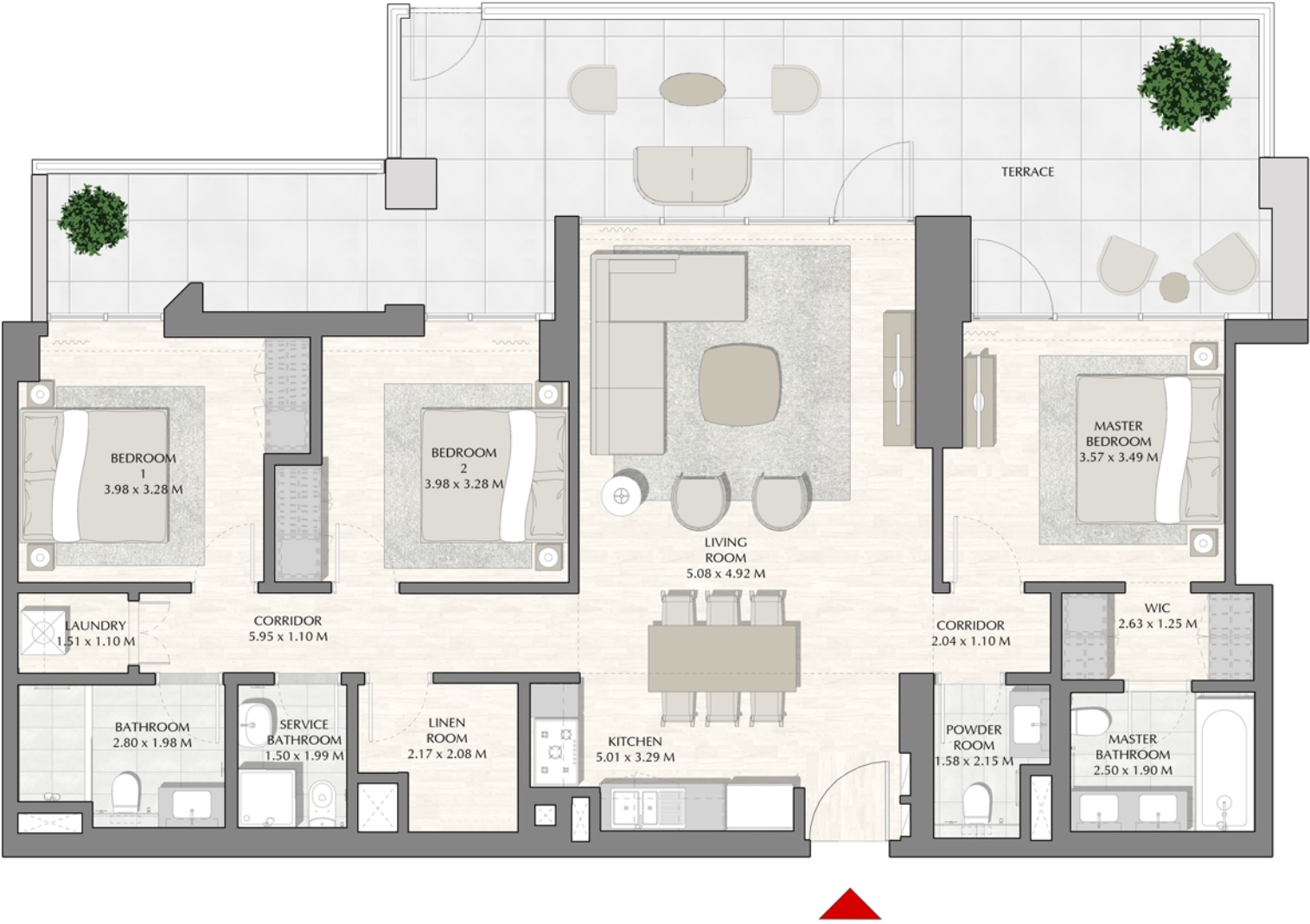
DUBAI CREEK
HARBOUR

SUNSET AT
CREEK BEACH

BUILDING 2
MEZZANINE LEVEL
UNIT M01

3 BEDROOM

APARTMENT AREA	123.94 SQ.M.	1334.08 SQ.FT.
BALCONY AREA	52.11 SQ.M.	560.91 SQ.FT.
TOTAL AREA	176.05 SQ.M.	1894.99 SQ.FT.



FLOOR PLAN 1. All dimensions are in imperial and metric, and measured from finish to finish excluding construction tolerances. 2. All materials, dimensions, and drawings are approximate only. 3. Information is subject to change without notice, at developer's absolute discretion. 4. Actual area may vary from the stated area. 5. Drawings not to scale. 6. All images used are for illustrative purpose only and do not represent the actual size, features, specifications, fittings, and furnishings. 7. The developer reserves the right to make revisions / alterations, at its absolute discretion, without any liability whatsoever.

DUBAI CREEK
HARBOUR

SUNSET AT
CREEK BEACH

BUILDING 2

MEZZANINE LEVEL

UNIT M02

3 BEDROOM

APARTMENT AREA	135.33 SQ.M.	1456.68 SQ.FT.
BALCONY AREA	83.64 SQ.M.	900.29 SQ.FT.
TOTAL AREA	218.97 SQ.M.	2356.97 SQ.FT.



FLOOR PLAN 1. All dimensions are in imperial and metric, and measured from finish to finish excluding construction tolerances. 2. All materials, dimensions, and drawings are approximate only. 3. Information is subject to change without notice, at developer's absolute discretion. 4. Actual area may vary from the stated area. 5. Drawings not to scale. 6. All images used are for illustrative purpose only and do not represent the actual size, features, specifications, fittings, and furnishings. 7. The developer reserves the right to make revisions / alterations, at its absolute discretion, without any liability whatsoever.

EMAAR





Sofiene Haddad +971503390477

SUNSET

AT CREEK BEACH

FOR MORE INFORMATION PLEASE CONTACT



 +971 55 476 7630
 +971 4 368 7878
 info@afsrealestate.com
 www.afsrealestate.com



 +971 50 674 2020
 +971 4 368 7878
 info@dubricks.com
 www.dubricks.com